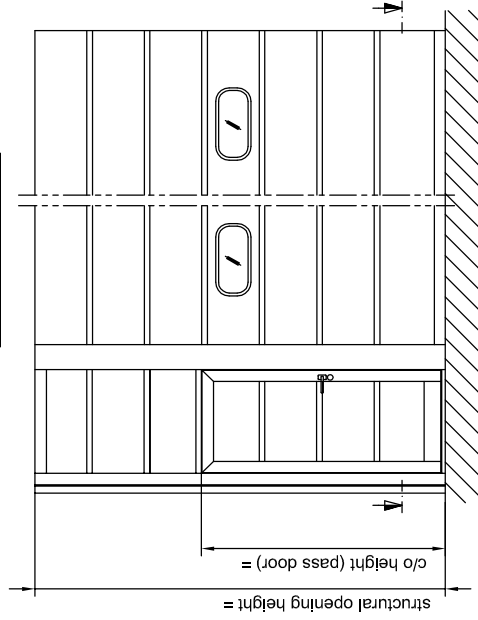
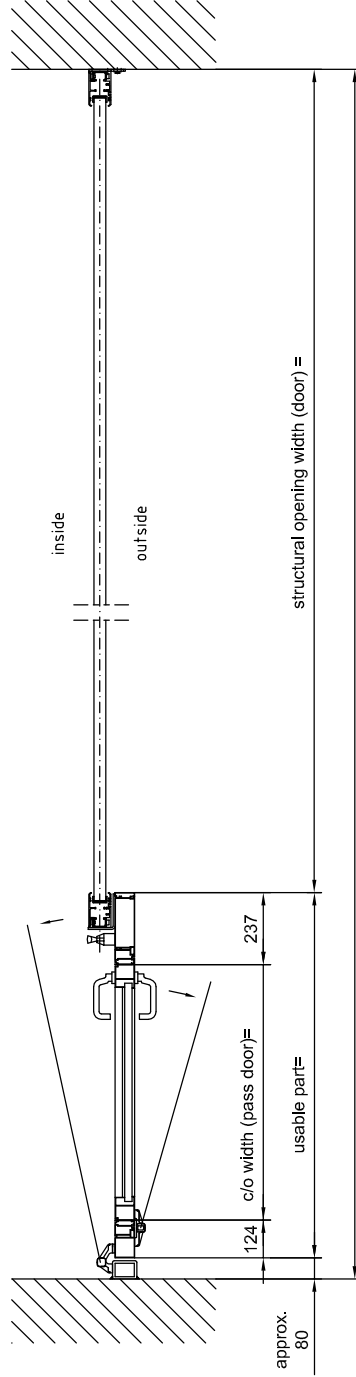


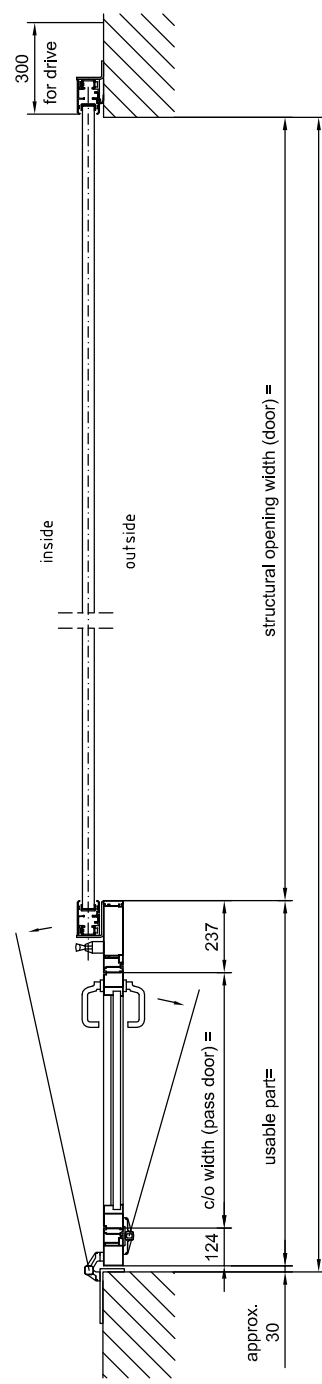
view from outside



section



mounting under the reveal
with steel tube 80 x 60 x 8



mounting behind the reveal
with aluminium angle 80 x 180 x 10

HT 40

including movable pass door

05/133/2

subject to technical alterations!

July 2000

CAD: ht40-door-movable

Unerschützermerk DIN 34

BUTZBACH
MADE IN GERMANY

Industrieflore - Weiherstr. 16

D - 89293 Kellmünz