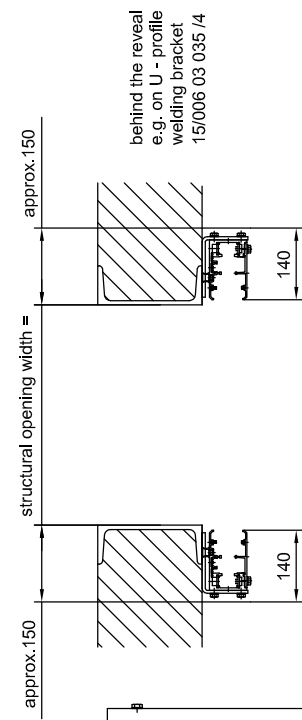
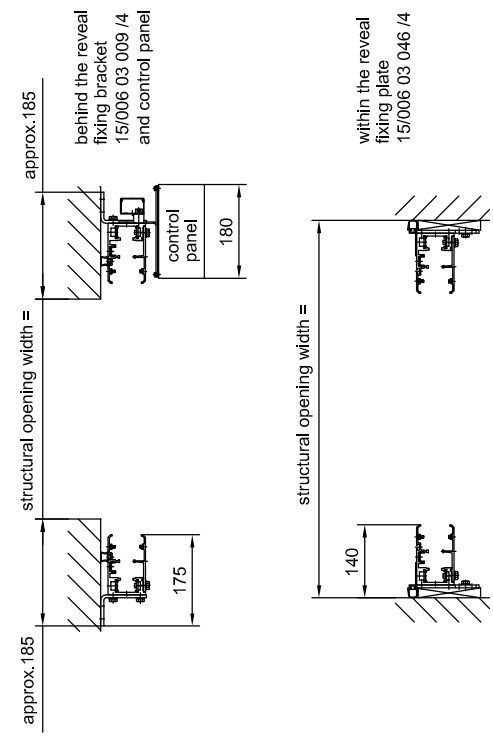
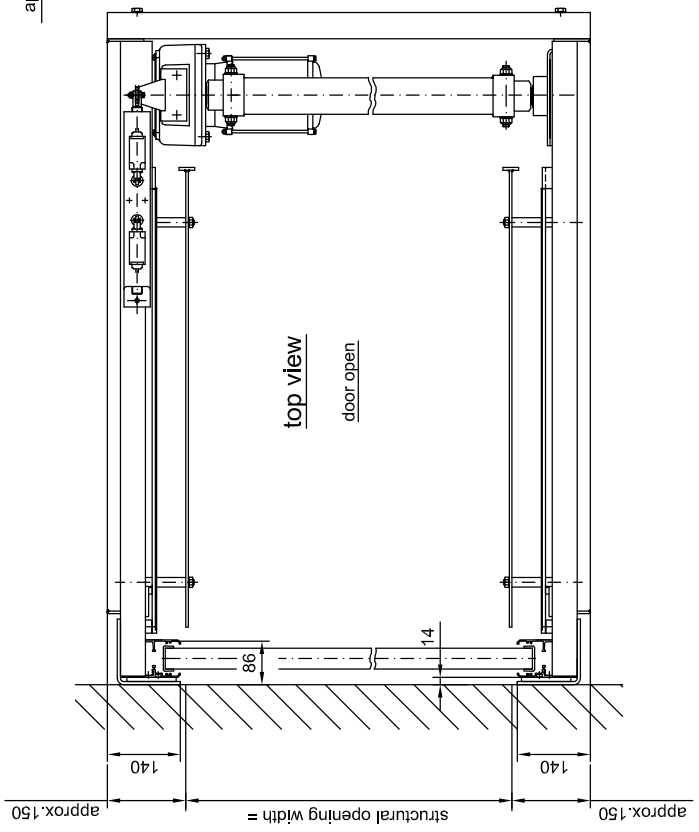
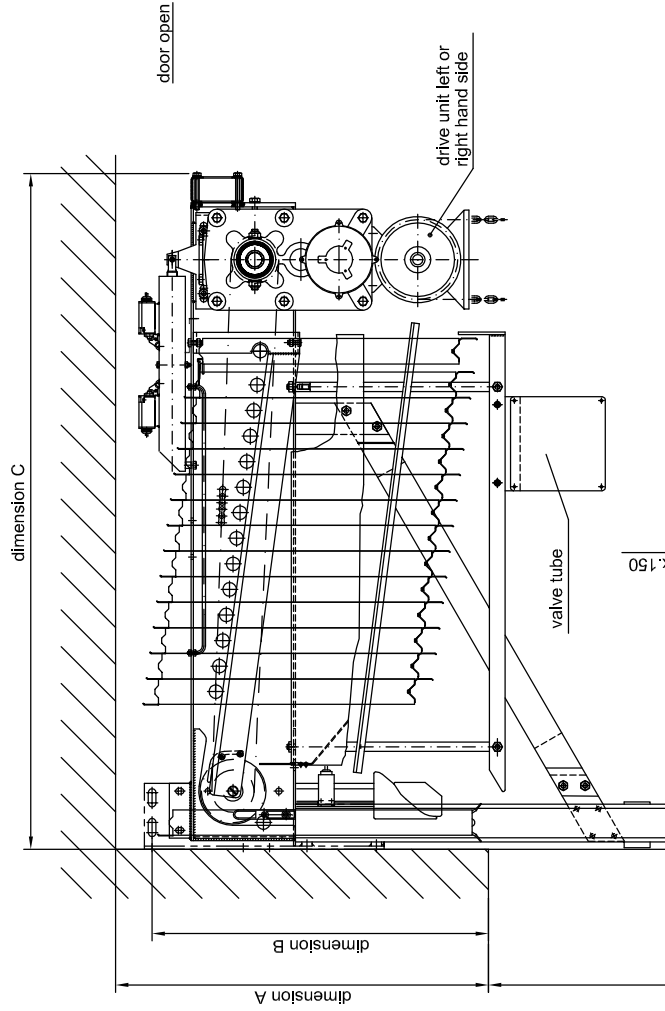


mounting and fixing details



structural opening height *	door panels dimension "A" dimension "B"	dimension "C"
up to 7450	13-15	715
up to 8920	16-18	715
		645
		1310
		1460

* the door height available depends on width and equipment of the door

HT 40 B

technical data sheet; 13-18 door panels

3.05/0305/2

April 2008

CAD: ht40B-13-18

Umschulungsvermerk DIN 34

BUTZBACH
MADE IN GERMANY

Industriestore - Weiherstr. 16
D - 89293 Kellmünz

subject to technical alterations!