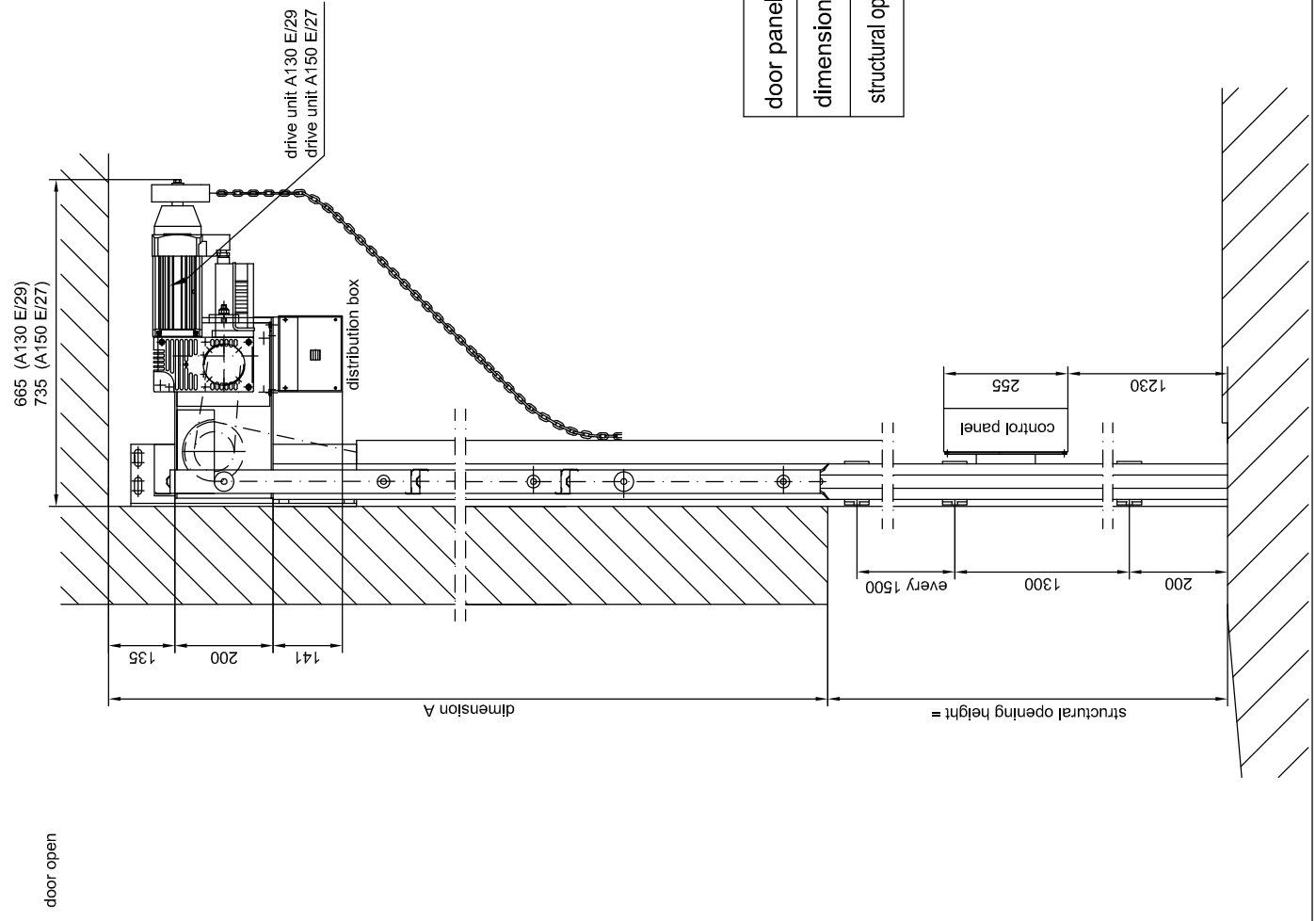
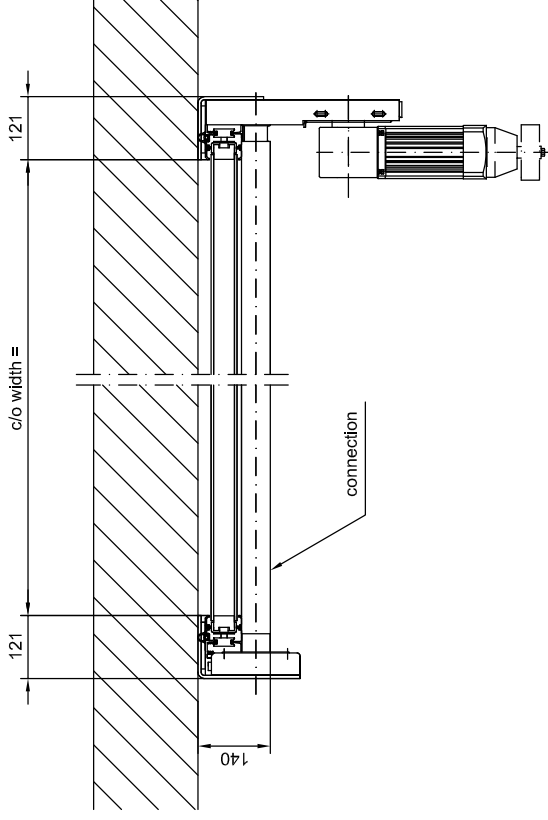


top view

door closed
installed behind the reveal



door panels	4	5	6	7	8	9	10	11	12
dimension A	2247	2755	3263	3771	4279	4787	5295	5803	6311
structural opening height	2045	2540	3030	3520	4015	4505	5000	5490	5980

HT40 V - only available without overload protection!
door weight max. 2800 N

mounting and fixing details see technical data sheet HT 40 standard!

HT 40 V

technical data sheet:
drive unit A130 E/29 and A150 E/27
3.05/0098/2A

Sept. 2007

CAD:
ht40V-A150
Unberschuzvermerk DIN 34

BUTZBACH
MADE IN GERMANY
Industriestore - Weiherstr. 16
D - 89293 Kellmünz

subject to technical alterations!