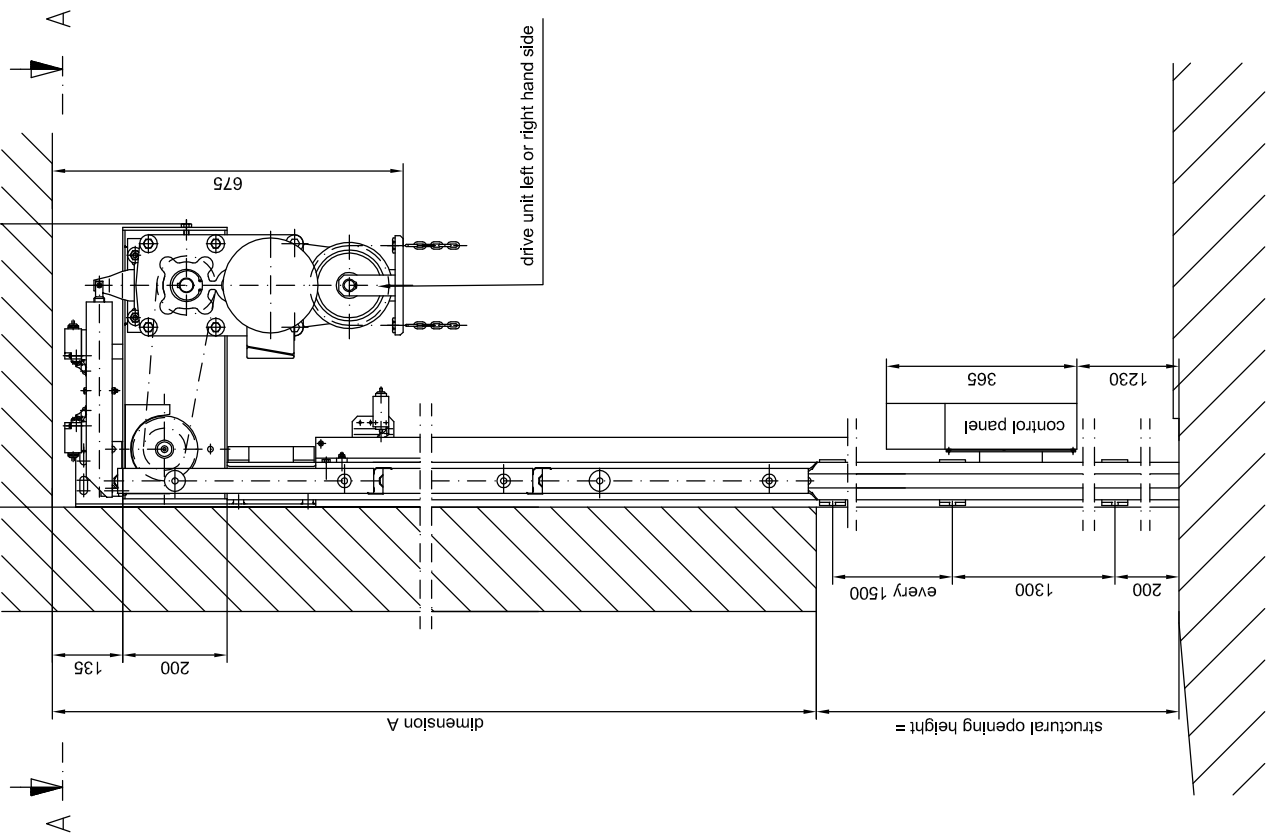
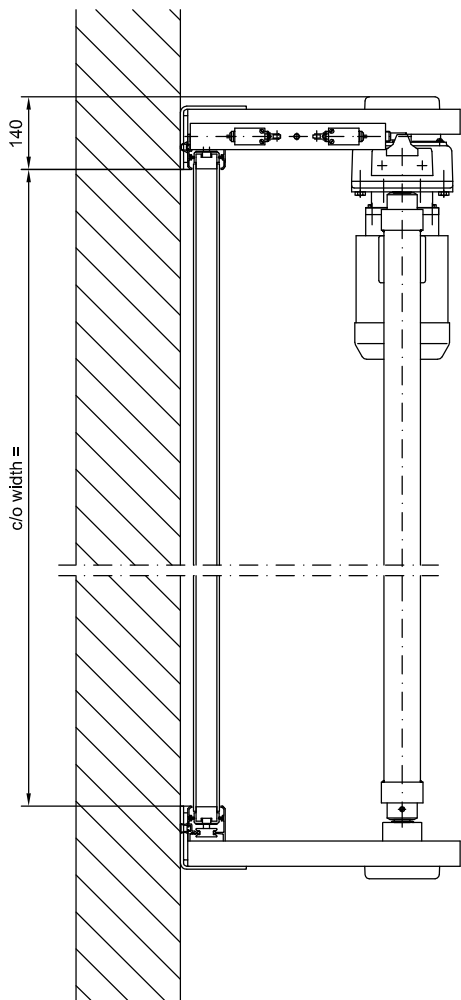


door open



top view

door closed  
installed behind the reveal



door panels	4	5	6	7	8	9	10	11	12
dimension A	2247	2755	3263	3771	4279	4787	5295	5803	6311
structural opening height	2045	2540	3030	3520	4015	4505	5000	5490	5980

mounting and fixing modes technical data sheet HT 40 with drive B 250

**HT 40 VB**

technical data sheet: steel connection

3.05/0207/2A

April 2008

CAD: ht40VB-steel

Umschulungsvermerk DIN 34

**BUTZBACH**  
MADE IN GERMANY

Industriestore - Weiherstr. 16  
D - 89293 Kellmünz

subject to technical alterations!