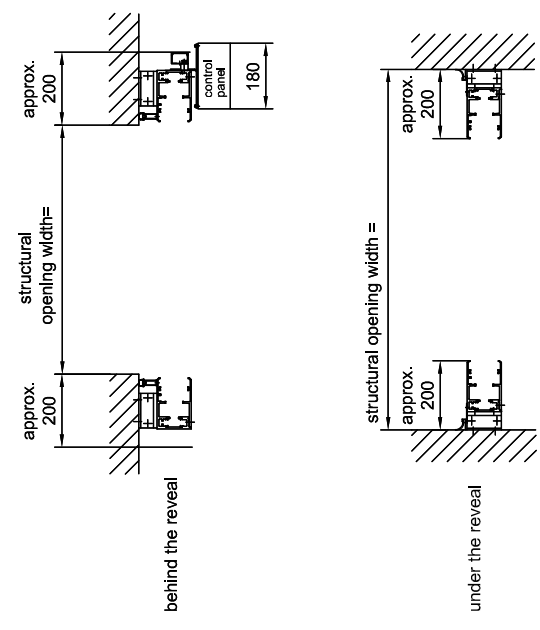
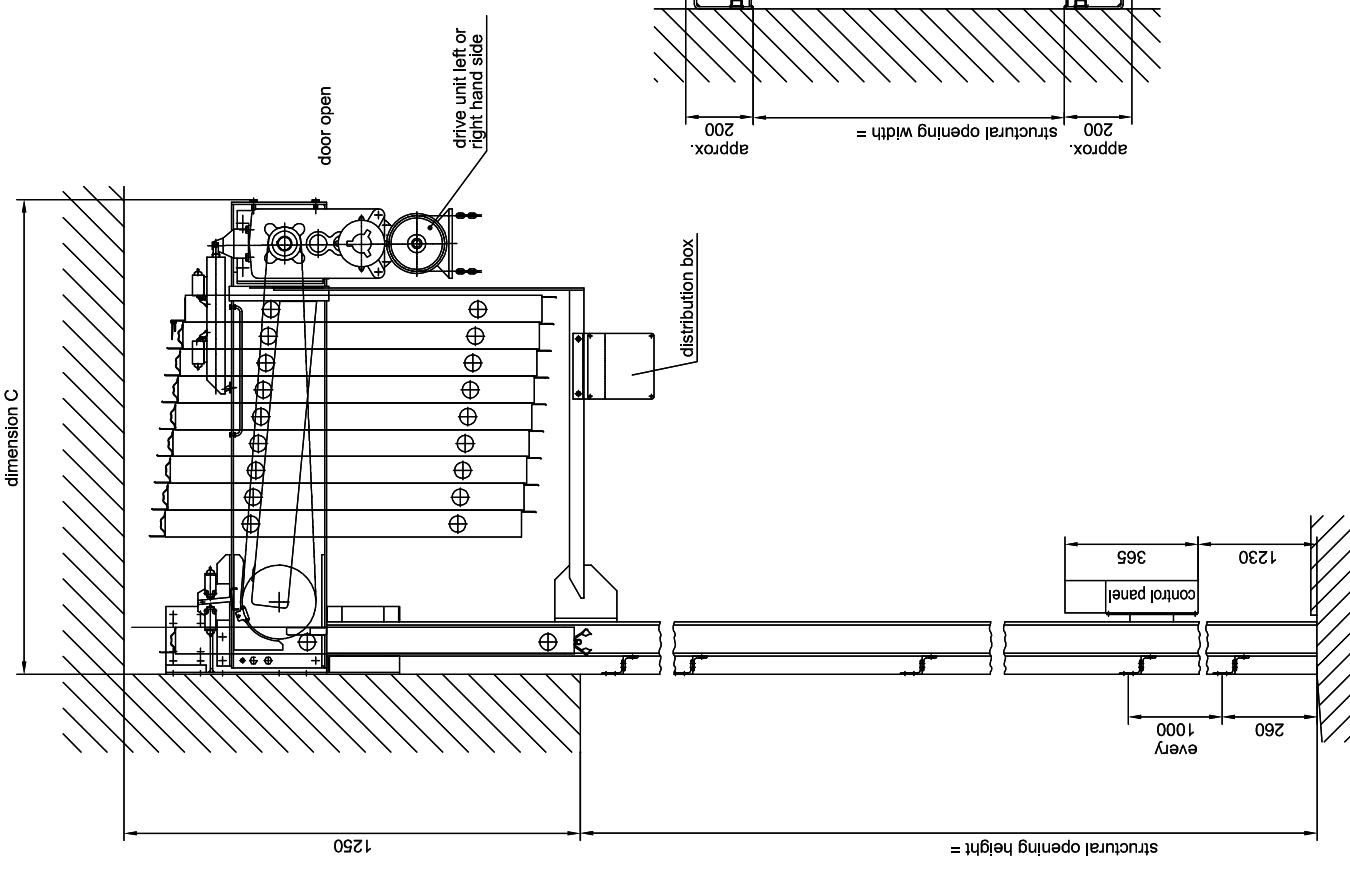
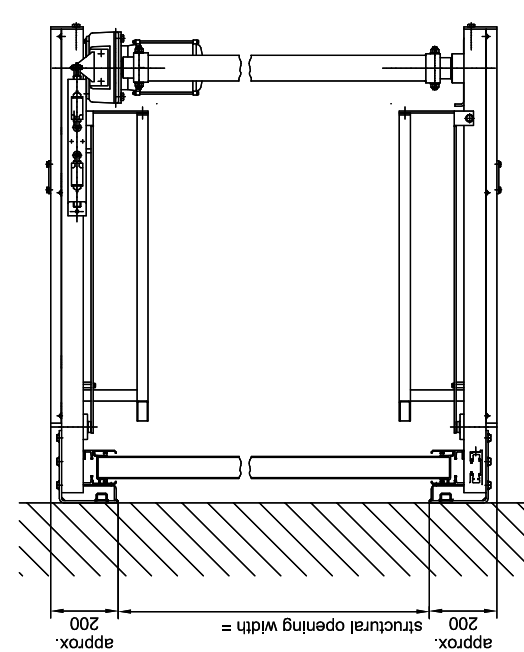


mounting and fixing details



top view
door closed



structural opening height	door panels	dimension "C"
up to approx. 7000	up to 7	1130
from approx. 7000 up to approx. 10000	8-10	1310

HT 60 H

technical data sheet, cassette 260

05/106/2

Sep. 2009

CAD: ht60H-260

Unerschützvermerk DIN 34

BUTZBACH
MADE IN GERMANY

Industriestore - Weiherstr. 16
D - 89293 Kellmünz

subject to technical alterations!