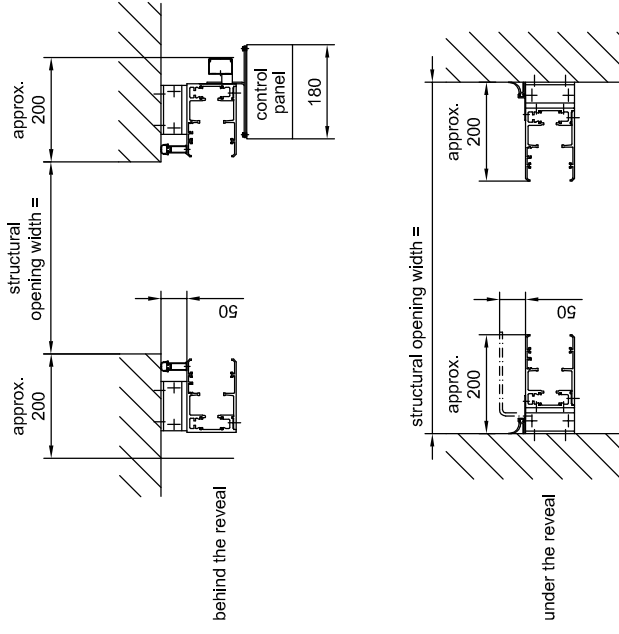
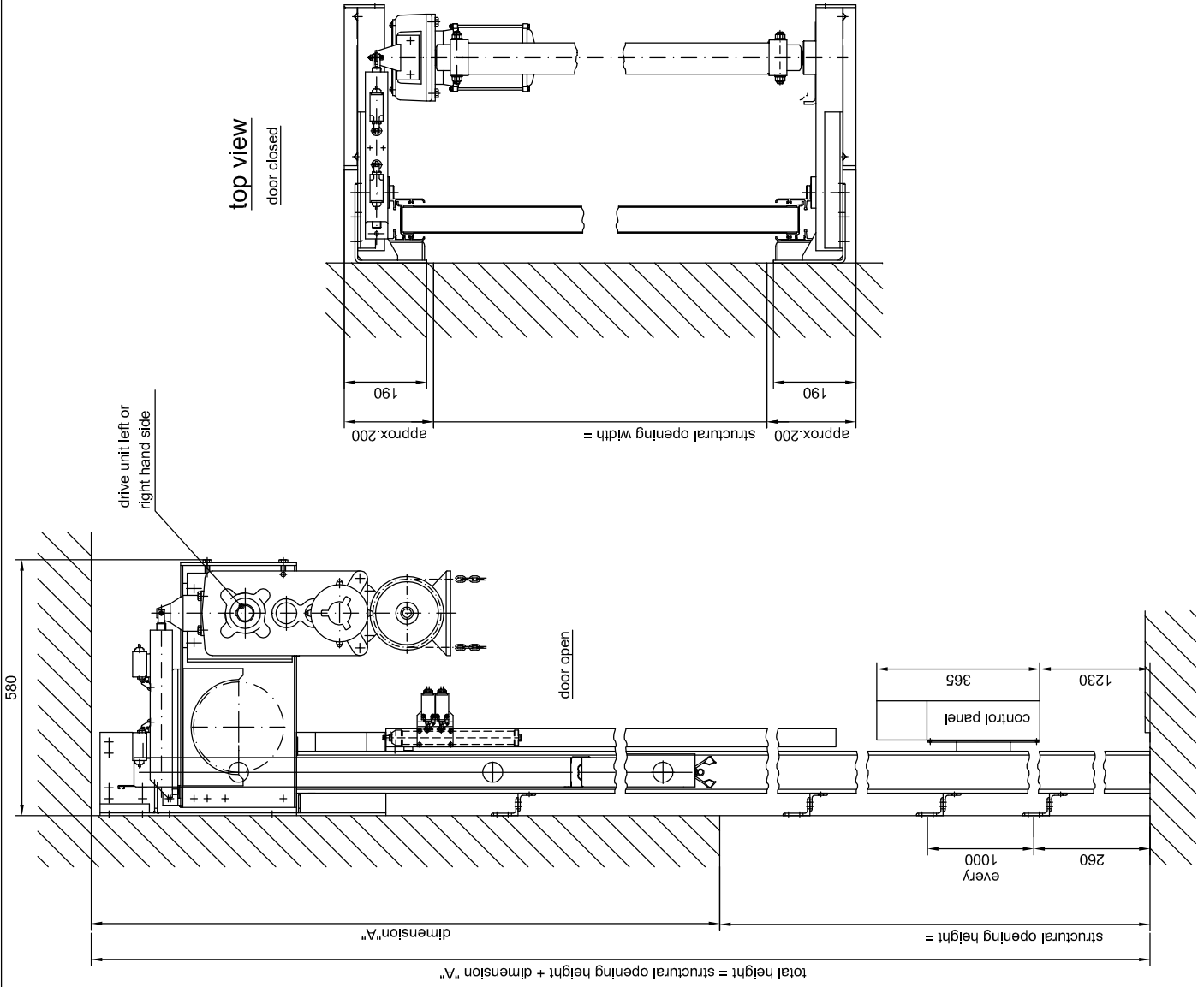


mounting and fixing details



door panels	2	3	4	5	6
dimension "A"	2256	3256	4256	5256	6256
structural opening height max.	2110	3090	4070	5050	6030

**HT 60 HV**

technical data sheet, cassette 260

05/230/2

Sep. 2009

CAD: ht60HV

Umschulungsvermerk DIN 34

**BUTZBACH**  
MADE IN GERMANY

Industriestore - Weiherstr. 16  
D - 89293 Kellmünz

subject to technical alterations!