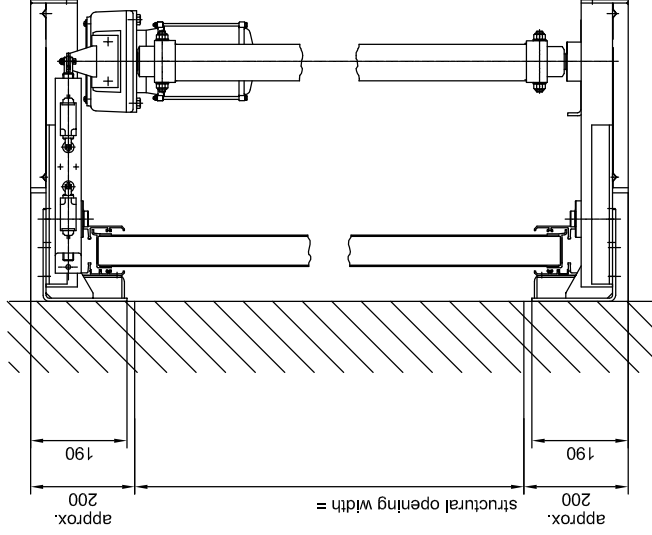
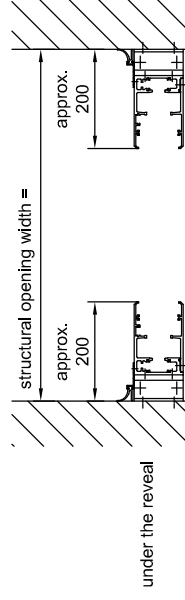
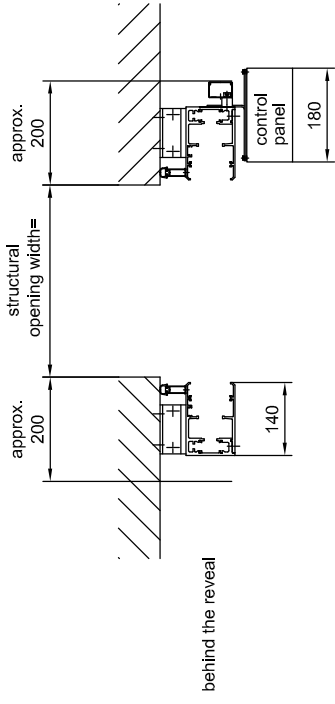
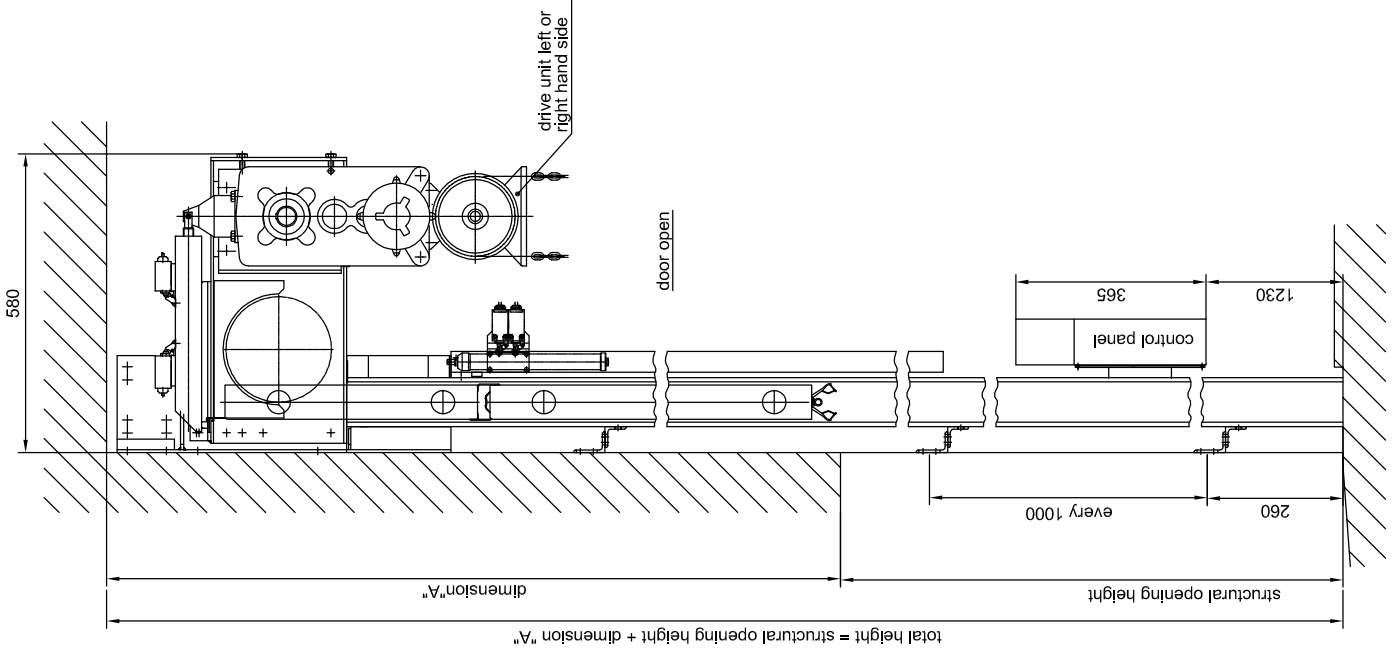


mounting and fixing details

top view
door closed



door panels	4	5	6	7	8	9	10	11	12
dimension "A"	2422	2930	3438	3946	4454	4962	5470	5978	6486

HT 60 NV

technical data sheet; cassette 260

subject to technical alterations!

05/229/2

Sep. 2009

CAD:
ht60NV

Umschulungsvermerk DIN 34

BUTZBACH
MADE IN GERMANY

Industriestore - Weiherstr. 16
D - 89293 Kellmünz