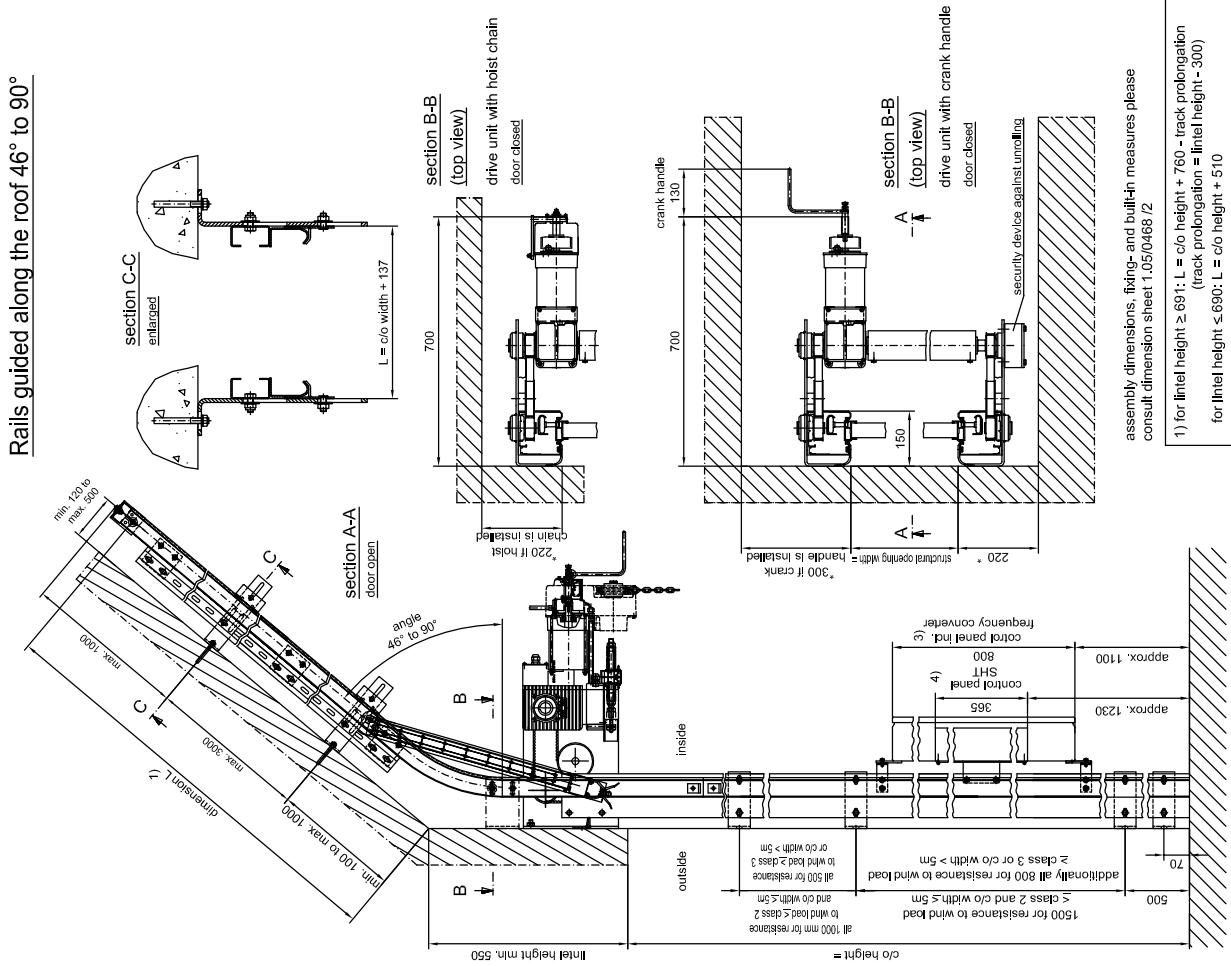
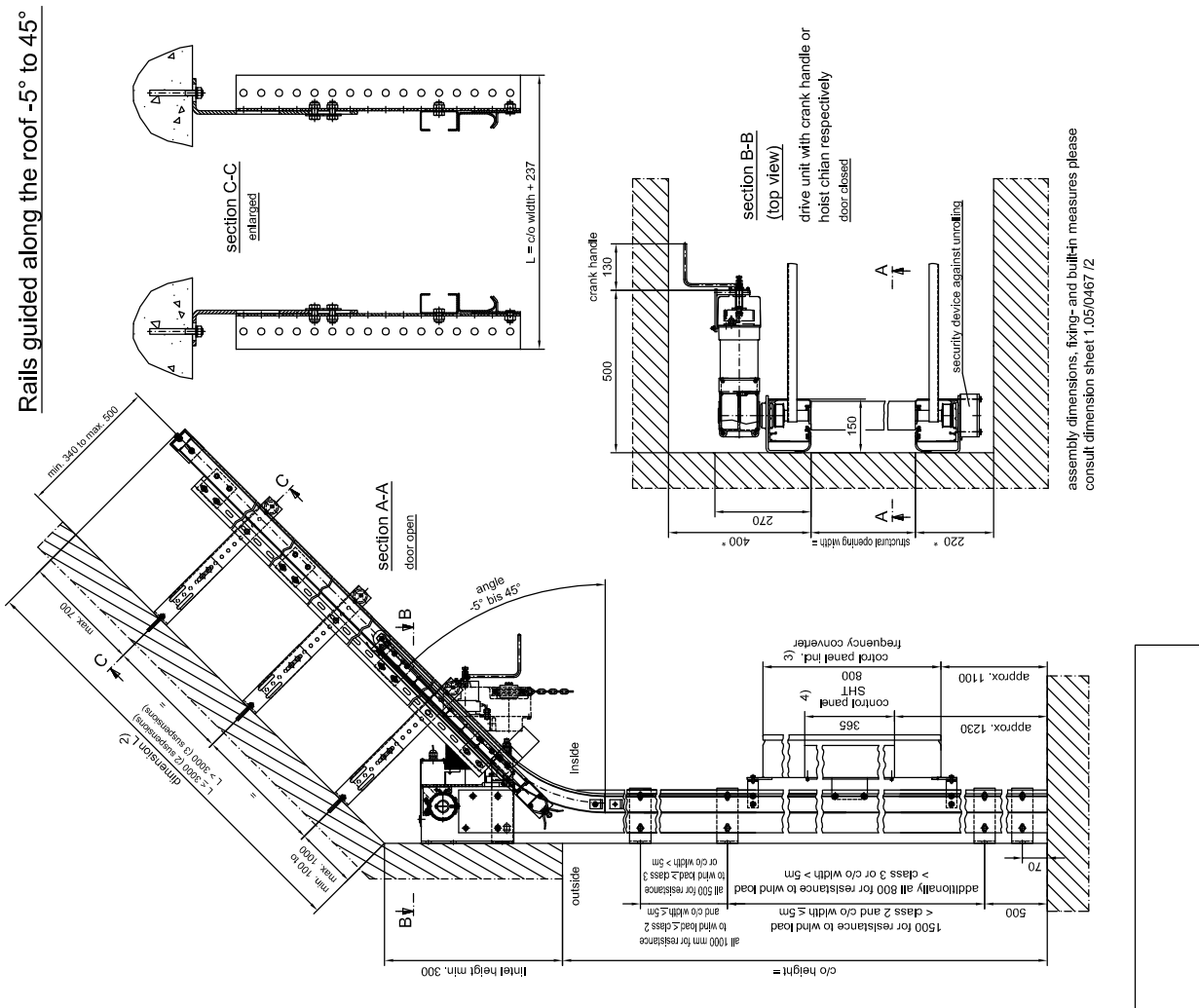


Rails guided along the roof 46° to 90°



Rails guided along the roof -5° to 45°



assembly dimensions, fixing- and built-in measures please consult dimension sheet 1.05/0468/2

1) for lintel height \geq 691; L = c/o height + 760 - track prolongation (track prolongation = lintel height - 300)
for lintel height \leq 690: L = c/o height + 510

2) for lintel height \geq 691; L = c/o height + 500 - track prolongation (track prolongation = lintel height - 300)
for lintel height \leq 690: L = c/o height + 245

3) if c/o height is less than 2550 then fix laterally

4) if c/o height is less than 2250 then fix laterally

* space requirement including space required for maintenance

Note for door systems with pass doors: LS

subject to technical alterations:

HTU 40/III
technical data sheet: rails guided along the roof
1.05/0471/2

April 2008
CAD: htu40/III-DF
Umschutzmmerk DIN 34

BUTZBACH
MADE IN GERMANY
Industriefore - Weiherstr. 16
D - 89293 Kellmünz